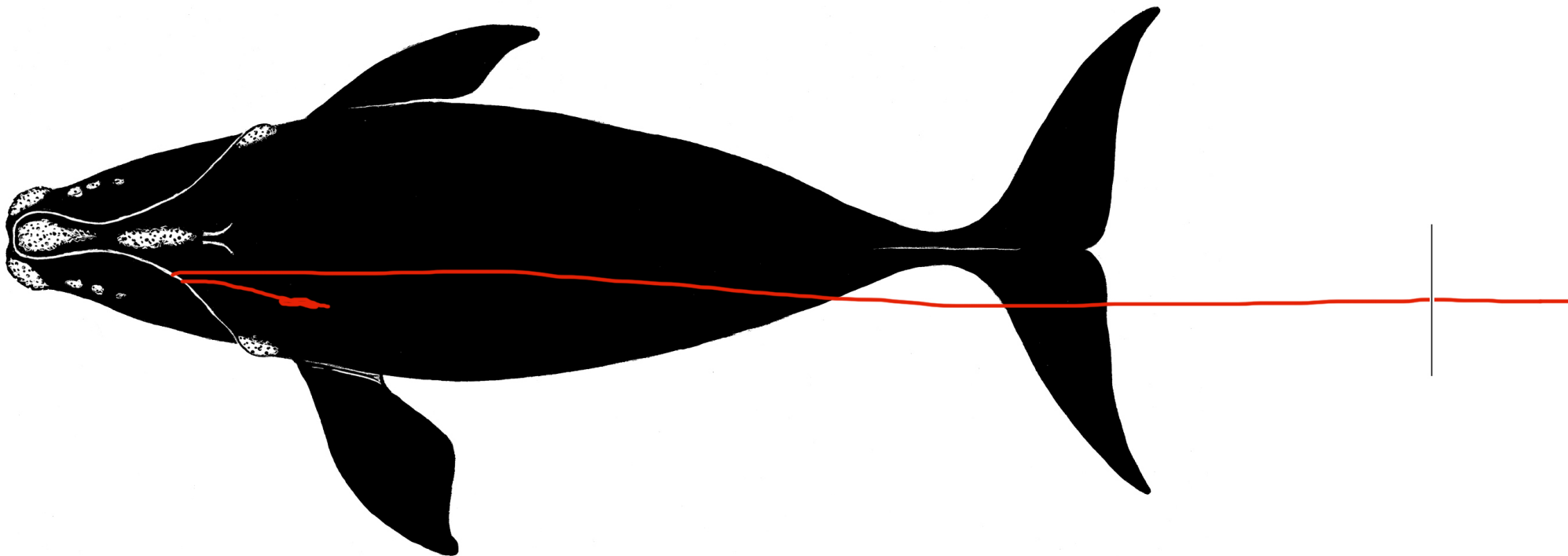


Species	Right Whale	Whale ID	Eg # 4057
---------	-------------	----------	-----------

Date first observed entangled (date seen prior without gear)		16 Feb 2014 (18 Mar 2013)			
Sex	Male	Birth year	2010	Age at entanglement	4

Case study ID	CCS	NMFS		GEAR ID
	WR-2014-01	E01-14		J021614 rw
Gear sample collected?	Yes	Gear type		



Reproductive prior to/after entanglement detection					
Entanglement injury severity					Severe
Entanglement configuration risk					High
Wound severity	Mouth	Head/ rostrum	Flippers	Body	Flukes
	Low	High	High	Low	Medium
Duration of time carrying gear		Minimum 55 days, maximum 389 days			
Disentangled?		Yes, partial			
Status		Alive? (in a different severe entanglement in 2016)			
Number of prior entanglements		3			

Entanglement configuration	Line entering/exiting left side of mouth with one end trailing 100 ft before sinking to depth
Anchoring points	Mouthline
Gear configuration confidence	High
Remaining questions	
Comments	Deep injury across rostrum, blowholes. Remaining gear shed

Polymer type		Copolymer
Gear component		490' of end line with 180' of it leaded line spliced in
Rope diameter (inches)		5/8
Breaking strength (lbs)	Tested	
	New	9,000



16 Feb 2014 Florida FWC



30 Apr 2015 CCS

Species	Right Whale	Whale ID	Eg # 1142
---------	-------------	----------	-----------

Date first observed entangled (date seen prior without gear)		1 Apr 2014 (8 Apr 2011)			
Sex	Female	Birth year	Unk	Age at entanglement	37+

Case study ID	CCS	NMFS		GEAR ID
	WR-2014-02	E02-14		
Gear sample collected?	No	Gear type		

No drawing available

Reproductive prior to/after entanglement detection					Yes/No
Entanglement injury severity					Severe
Entanglement configuration risk					High
Wound severity	Mouth	Head/ rostrum	Flippers	Body	Flukes
	Unknown	High	Unknown	None	Unknown
Duration of time carrying gear		Minimum 1 day, maximum 1,088 days			
Disentangled?		No			
Status		Likely dead - no subsequent sightings			
Number of prior entanglements		3			

Entanglement configuration	Single tight wrap on rostrum
Anchoring points	Mouthline
Gear configuration confidence	Low
Remaining questions	Not known if flippers involved
Comments	

Polymer type		
Gear component		
Rope diameter (inches)		
Breaking strength (lbs)	Tested	
	New	



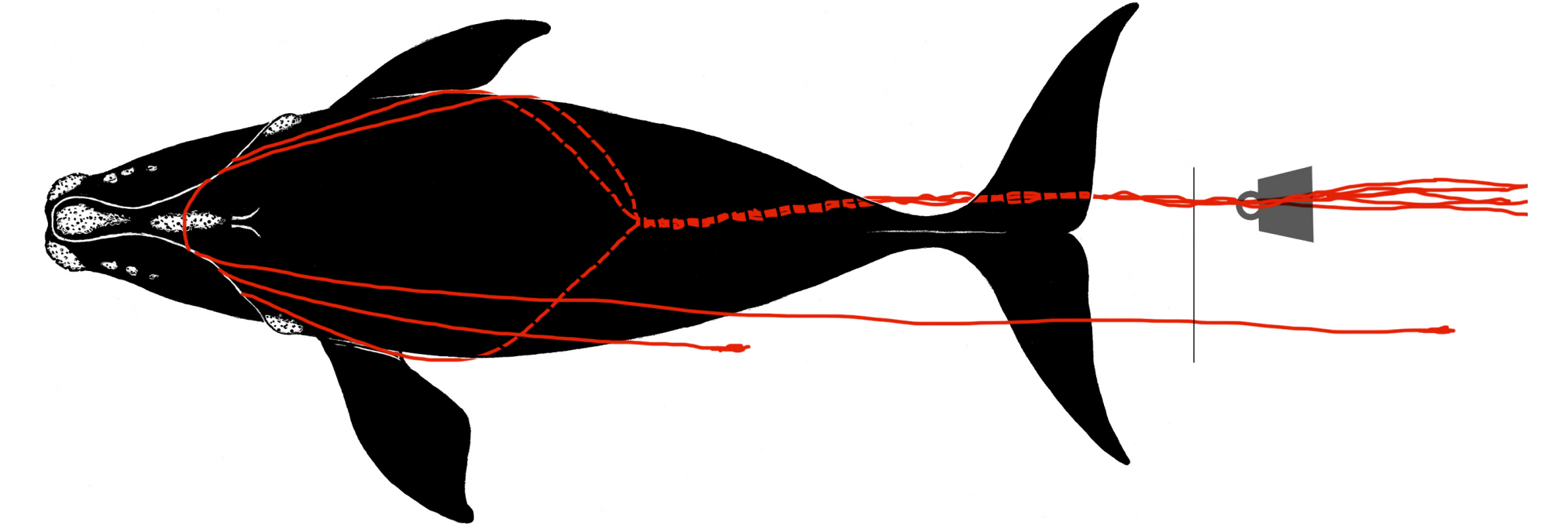
1 Apr 2014, SEFSC/AMAPPS

This case study was developed at the New England Aquarium with financial support from NOAA Fisheries. Whale data were provided by the North Atlantic Right Whale Consortium ([www.narwc.org](http://www.narwc.org)). All images are listed with appropriate credit information and taken under permit. Retrieved gear is assessed and archived by NOAA Fisheries. Entanglement diagrams courtesy of S. Landry, Center for Coastal Studies. Please contact Amy Knowlton ([aknowlton@neaq.org](mailto:aknowlton@neaq.org)) for potential use.

Species	Right Whale	Whale ID	Eg # 1131
---------	-------------	----------	-----------

Date first observed entangled (date seen prior without gear)		29 Jun 2014 (22 May 2010)			
Sex	Male	Birth year	Unk	Age at entanglement	35+

Case study ID	CCS	NMFS		GEAR ID
	WR-2014-08	E09-14		
Gear sample collected?		No	Gear type	



Reproductive prior to/after entanglement detection					
Entanglement injury severity					Severe
Entanglement configuration risk					High
Wound severity	Mouth	Head/ rostrum	Flippers	Body	Flukes
	Unknown	High	High	Unknown	Unknown
Duration of time carrying gear		Minimum 1 day, maximum 1,498 days			
Disentangled?		No			
Status		Likely dead, no subsequent sightings			
Number of prior entanglements		3			

Entanglement configuration	Wrap of rostrum, presumably trailing heavy gear
Anchoring points	Mouthline
Gear configuration confidence	High
Remaining questions	
Comments	Very poor condition

Polymer type		
Gear component		
Rope diameter (inches)		
Breaking strength (lbs)	Tested	
	New	



29 Jun 2014, NEFSC

This case study was developed at the New England Aquarium with financial support from NOAA Fisheries. Whale data were provided by the North Atlantic Right Whale Consortium ([www.narwc.org](http://www.narwc.org)). All images are listed with appropriate credit information and taken under permit. Retrieved gear is assessed and archived by NOAA Fisheries. Entanglement diagrams courtesy of S. Landry, Center for Coastal Studies. Please contact Amy Knowlton ([aknowlton@neaq.org](mailto:aknowlton@neaq.org)) for potential use.

Species	Right Whale	Whale ID	Eg # 4001
---------	-------------	----------	-----------

Date first observed entangled (date seen prior without gear)		20 Aug 2014 (12 Apr 2014)			
Sex	Male	Birth year	2010	Age at entanglement	4

Case study ID	CCS	NMFS		GEAR ID
	WR-2014-15			
Gear sample collected?	No	Gear type		

No drawing available

Reproductive prior to/after entanglement detection					
Entanglement injury severity				Severe	
Entanglement configuration risk				High	
Wound severity	Mouth	Head/ rostrum	Flippers	Body	Flukes
	Unknown	High	Unknown	None	None
Duration of time carrying gear		Minimum 38 days, maximum 182 days			
Disentangled?		No			
Status		Likely dead. Last seen in 2014			
Number of prior entanglements		2			

Entanglement configuration	Single line across blowholes which has become embedded over time
Anchoring points	Head
Gear configuration confidence	Low
Remaining questions	Flipper involvement, trailing gear unknown
Comments	

Polymer type		
Gear component		
Rope diameter (inches)		
Breaking strength (lbs)	Tested	
	New	



4 Sep 2014, Coastwise Consulting



4 Sep 2014, NEAq



12 Oct 2014, Opportunistic sighting

This case study was developed at the New England Aquarium with financial support from NOAA Fisheries. Whale data were provided by the North Atlantic Right Whale Consortium ([www.narwc.org](http://www.narwc.org)). All images are listed with appropriate credit information and taken under permit. Retrieved gear is assessed and archived by NOAA Fisheries. Entanglement diagrams courtesy of S. Landry, Center for Coastal Studies. Please contact Amy Knowlton ([aknowlton@neaq.org](mailto:aknowlton@neaq.org)) for potential use.

Species	Right Whale	Whale ID	Unid carcass
---------	-------------	----------	--------------

Date first observed entangled (date seen prior without gear)		4 Sep 2014 (unknown)			
Sex	Unk	Birth year	Unk	Age at entanglement	Unk

Case study ID	CCS	NMFS		GEAR ID
	WR-2014-17	E18-14		
Gear sample collected?	No	Gear type		

No drawing available

Reproductive prior to/after entanglement detection					
Entanglement injury severity					
Entanglement configuration risk				High	
Wound severity	Mouth	Head/ rostrum	Flippers	Body	Flukes
Duration of time carrying gear		Minimum 1 day, maximum unknown			
Disentangled?		No			
Status		Dead			
Number of prior entanglements					

Entanglement configuration	Line wrapped around body and right flipper and crossing head.
Anchoring points	Flipper, mouth?
Gear configuration confidence	Low
Remaining questions	Unsure if left flipper and mouth involved
Comments	Documented during an aerial DFO flight in GoSL

Polymer type		
Gear component		
Rope diameter (inches)		
Breaking strength (lbs)	Tested	
	New	



VC

4 Sep 2014 DFO/MART

Species	Right Whale	Whale ID	Eg # 3279
---------	-------------	----------	-----------

Date first observed entangled (date seen prior without gear)		17 Sep 2014 (21 Apr 2014)			
Sex	Male	Birth year	2002	Age at entanglement	12

Case study ID	CCS	NMFS		GEAR ID
	WR-2014-18	E20-14		
Gear sample collected?	No	Gear type		

No drawing available

Reproductive prior to/after entanglement detection					
Entanglement injury severity				Severe	
Entanglement configuration risk				High	
Wound severity	Mouth	Head/ rostrum	Flippers	Body	Flukes
	Unknown	High	Unknown	None	High
Duration of time carrying gear		Minimum 1 day, maximum 148 days			
Disentangled?		No			
Status		Likely dead - no subsequent sightings			
Number of prior entanglements		1			

Entanglement configuration	Line embedded in blowholes and also through right mouth
Anchoring points	Mouthline, head
Gear configuration confidence	Low
Remaining questions	Unknown if flippers involved
Comments	Entanglement injuries also at tail

Polymer type		
Gear component		
Rope diameter (inches)		
Breaking strength (lbs)	Tested	
	New	



17 Sep 2014 CWI/NEAq



17 Sep 2014 CWI/NEAq



17 Sep 2014 CWI/NEAq

Species	Right Whale	Whale ID	Unid carcass
---------	-------------	----------	--------------

Date first observed entangled (date seen prior without gear)		27 Sep 2014 (unknown)			
Sex	Unk	Birth year	Unk	Age at entanglement	Unk

Case study ID	CCS	NMFS		GEAR ID
	WR-2014-20	E22-14		J092714 rw
Gear sample collected?	No	Gear type		

No drawing available

Reproductive prior to/after entanglement detection					
Entanglement injury severity					
Entanglement configuration risk				High	
Wound severity	Mouth	Head/ rostrum	Flippers	Body	Flukes
Duration of time carrying gear		Minimum 1 day, maximum unknown			
Disentangled?		No			
Status		Dead			
Number of prior entanglements					

Entanglement configuration	Line around right flipper, across rostrum and around body
Anchoring points	Flipper, body
Gear configuration confidence	Low
Remaining questions	Unsure if mouth, left flipper, tail involved
Comments	Orange polyball next to body; observed in southern New England

Polymer type		
Gear component		
Rope diameter (inches)		
Breaking strength (lbs)	Tested	
	New	

UNCLASSIFIED

SP UNFOV Auto

Day

PCOR-

Rate Aid

R



AGL 1489 FT MSL 1492 FT

Lat: N 40° 44.753 Lon: W 70° 20.788'

Az: -99.3° El: 5.1° 27-Sep-2014 15:05:55Z

27 Sep 2014, US Coast Guard

This case study was developed at the New England Aquarium with financial support from NOAA Fisheries. Whale data were provided by the North Atlantic Right Whale Consortium ([www.narwc.org](http://www.narwc.org)). All images are listed with appropriate credit information and taken under permit. Retrieved gear is assessed and archived by NOAA Fisheries. Entanglement diagrams courtesy of S. Landry, Center for Coastal Studies. Please contact Amy Knowlton ([aknowlton@neaq.org](mailto:aknowlton@neaq.org)) for potential use.

Species	Right Whale	Whale ID	Unid
---------	-------------	----------	------

Date first observed entangled (date seen prior without gear)		13 Jun 2015 (unknown)			
Sex	Unk	Birth year	Unk	Age at entanglement	Unk

Case study ID	CCS	NMFS		GEAR ID
	WR-2015-05			
Gear sample collected?	No	Gear type		

No drawing available

Reproductive prior to/after entanglement detection					
Entanglement injury severity					
Entanglement configuration risk				High	
Wound severity	Mouth	Head/ rostrum	Flippers	Body	Flukes
Duration of time carrying gear		Minimum 1 day, maximum unknown			
Disentangled?		No			
Status		Alive at sighting			
Number of prior entanglements					

Entanglement configuration	Towing two balloon buoys after first observed struggling
Anchoring points	Unknown
Gear configuration confidence	Low
Remaining questions	
Comments	Poor photodocumentation

Polymer type		
Gear component		
Rope diameter (inches)		
Breaking strength (lbs)	Tested	
	New	

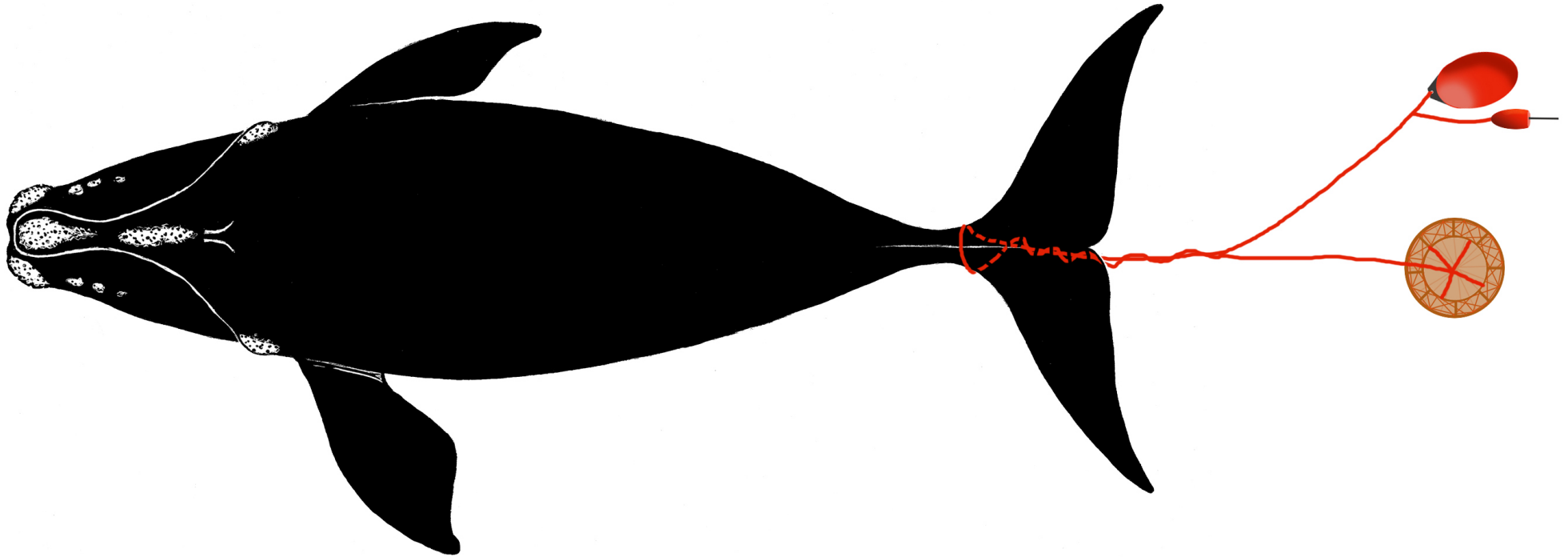
13 Jun 2015, BIWSC



Species	Right Whale	Whale ID	Eg # 3160
---------	-------------	----------	-----------

Date first observed entangled (date seen prior without gear)		18 Jul 2015 (28 May 2015)			
Sex	Male	Birth year	2001	Age at entanglement	14

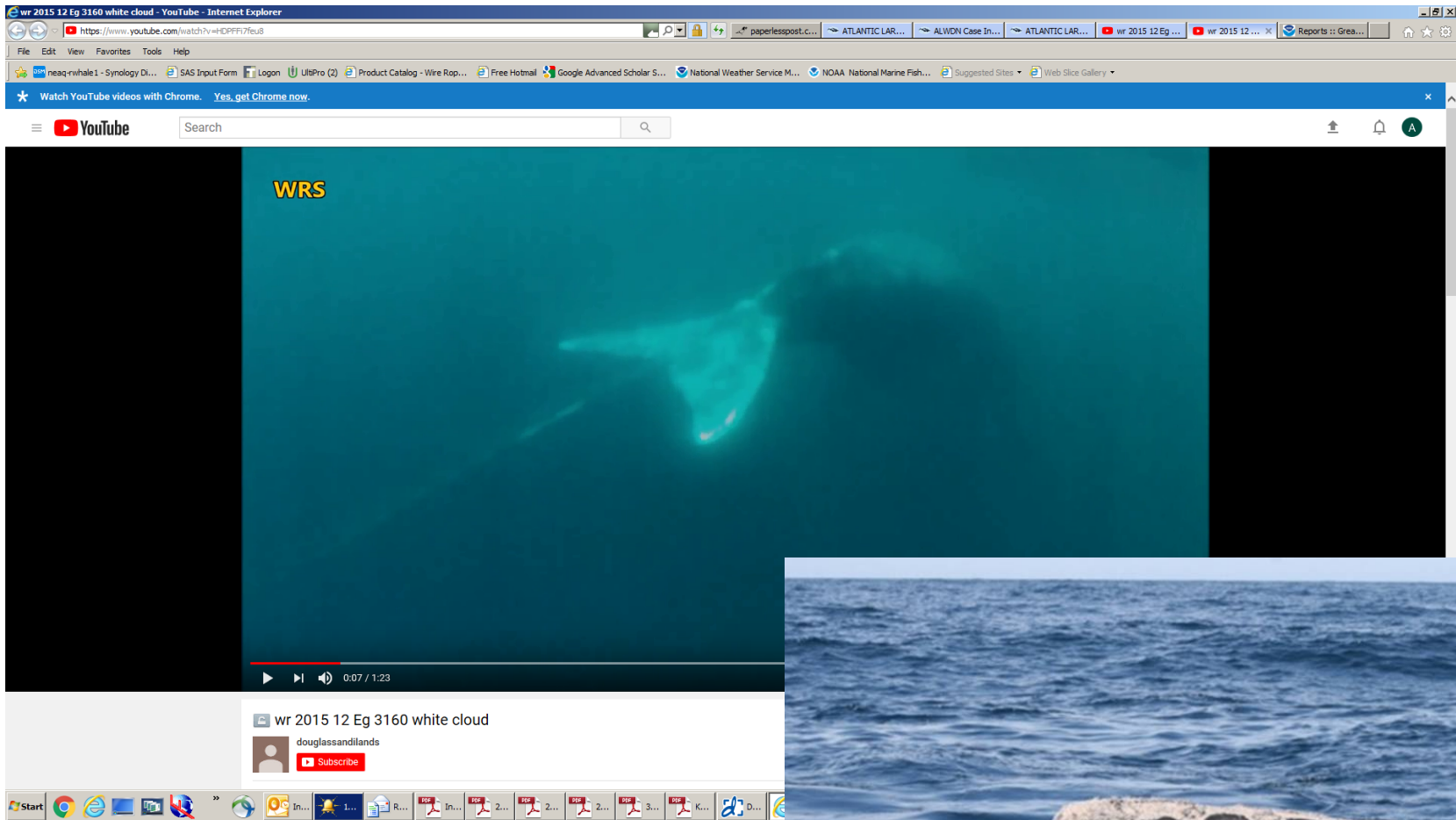
Case study ID	CCS	NMFS		GEAR ID
	WR-2015-12			
Gear sample collected?	No	Gear type	Snow crab	



Reproductive prior to/after entanglement detection					
Entanglement injury severity					Severe
Entanglement configuration risk					High
Wound severity	Mouth	Head/ rostrum	Flippers	Body	Flukes
	Medium	Low	Unknown	Unknown	High
Duration of time carrying gear		Minimum 1 day, maximum 50 days			
Disentangled?		Yes			
Status		Likely dead? No subsequent sightings			
Number of prior entanglements		3			

Entanglement configuration	Multiple wraps embedded around peduncle and going to depth and then back up to buoys.
Anchoring points	Tail
Gear configuration confidence	High
Remaining questions	
Comments	Disentanglers described it as 25 mm polysteel rope

Polymer type		Copolymer
Gear component		
Rope diameter (inches)		~ 1 inch
Breaking strength (lbs)	Tested	
	New	~19,000



18 Jul 2015 DFO



Species	Right Whale	Whale ID	Eg # 1306
---------	-------------	----------	-----------

Date first observed entangled (date seen prior without gear)		13 Sep 2015 (8 May 2015)			
Sex	Male	Birth year	Unk	Age at entanglement	32+

Case study ID	CCS	NMFS		GEAR ID
	WR-2015-22			
Gear sample collected?	No	Gear type		

No drawing available

Reproductive prior to/after entanglement detection					Yes/Unk
Entanglement injury severity					Severe
Entanglement configuration risk					Low
Wound severity	Mouth	Head/ rostrum	Flippers	Body	Flukes
	Low	None	Unknown	Low	High
Duration of time carrying gear		Minimum 368 days, maximum 495 days			
Disentangled?		No			
Status		Alive? Last seen in 2016 in poor condition			
Number of prior entanglements		3			

Entanglement configuration	Short line woven in front right side of baleen and trailing partway down right body
Anchoring points	Mouthline
Gear configuration confidence	High
Remaining questions	
Comments	Deep wound at right insertion

Polymer type		
Gear component		
Rope diameter (inches)		
Breaking strength (lbs)	Tested	
	New	



15 Sep 2016  
Opportunistic sighting



23 May 2016 NEFSC

Species	Right Whale	Whale ID	Unid
---------	-------------	----------	------

Date first observed entangled (date seen prior without gear)		28 Sep 2015 (unknown)			
Sex	Unk	Birth year	Unk	Age at entanglement	Unk

Case study ID	CCS	NMFS		GEAR ID
	WR-2015-28			
Gear sample collected?	No	Gear type		

No drawing available

Reproductive prior to/after entanglement detection					
Entanglement injury severity					
Entanglement configuration risk					
Wound severity	Mouth	Head/ rostrum	Flippers	Body	Flukes
Duration of time carrying gear		Minimum 1 day, maximum unknown			
Disentangled?		No			
Status		Alive at sighting			
Number of prior entanglements					

Entanglement configuration	Two lines trailing off tail to depth when fluking
Anchoring points	Unknown
Gear configuration confidence	Low
Remaining questions	Is there weighted gear attached?
Comments	Poor photodocumentation

Polymer type		
Gear component		
Rope diameter (inches)		
Breaking strength (lbs)	Tested	
	New	



28 Sep 2015, Whale watch boat