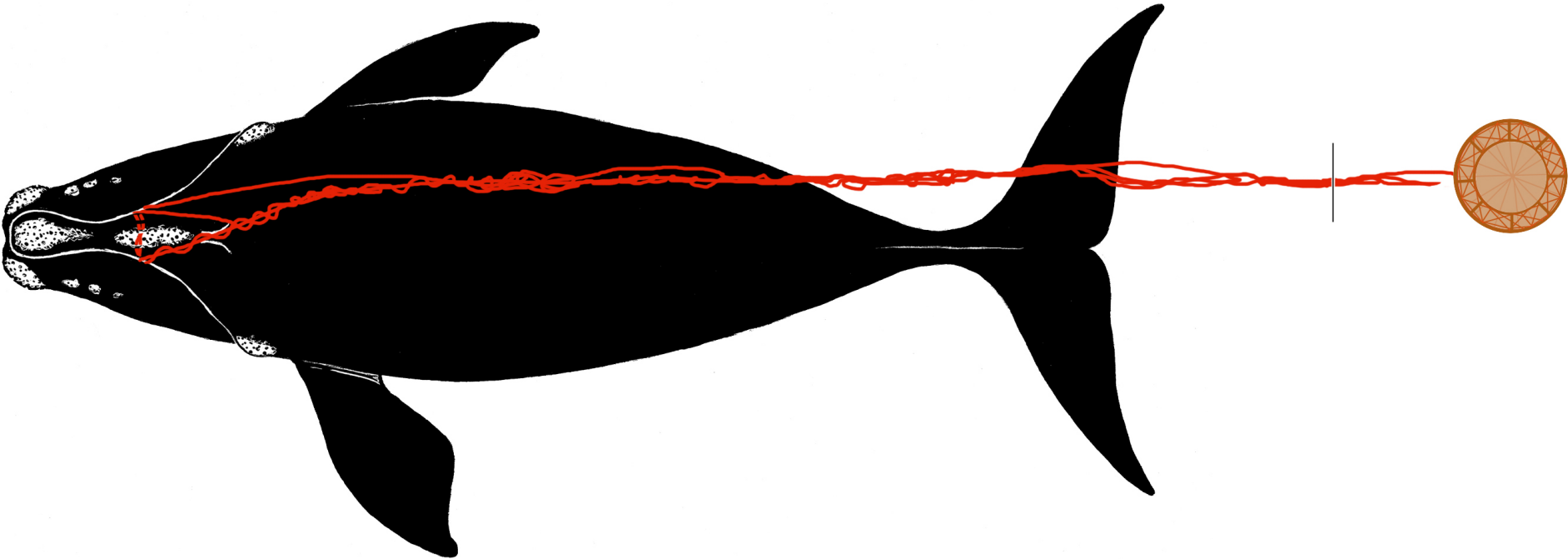


Species	Right Whale	Whale ID	3530
---------	-------------	----------	------

Date first observed entangled (date seen prior without gear)		5 Jan 2017 (14 Aug 2016)			
Sex	Male	Birth year	2004	Age at entanglement	13

Case study ID	CCS	NMFS		GEAR ID
	WR-2017-02	E02-17		
Gear sample collected?	Yes	Gear type	Canadian snow crab	



Reproductive prior to/after entanglement detection					
Entanglement injury severity				Severe	
Entanglement configuration risk				High	
Wound severity	Mouth	Head/ rostrum	Flippers	Body	Flukes
	Unknown??	Low	Unknown	Low	High
Duration of time carrying gear		Minimum unknown, maximum 143 days			
Disentangled?		Yes			
Status		Alive, last seen in 2019			
Number of prior entanglements		2			

Entanglement configuration	Two lines exiting either side of mouth forming a bridle and trailing behind whale at depth
Anchoring points	Mouth
Gear configuration confidence	High
Remaining questions	None
Comments	451 ft of endline and crab pot recovered

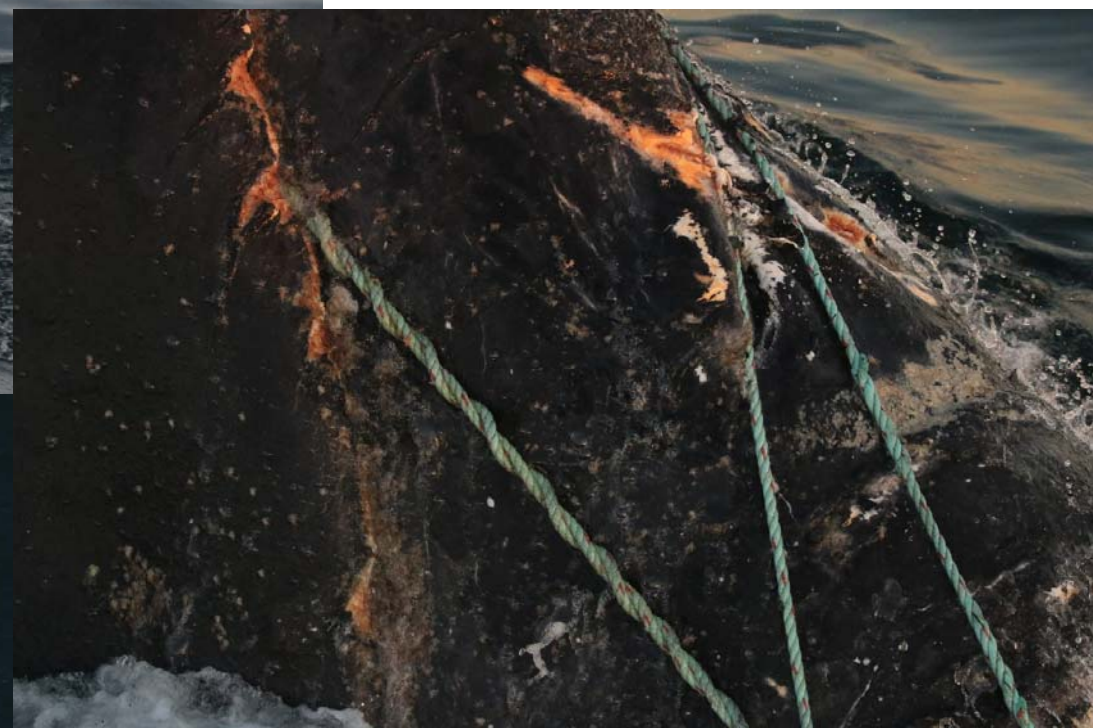
Polymer type		Rope assessment in progress
Gear component		Endline and crab pot
Rope diameter (inches)		
Breaking strength (lbs)	Tested	
	New	



5 Jan 2017 GDNR



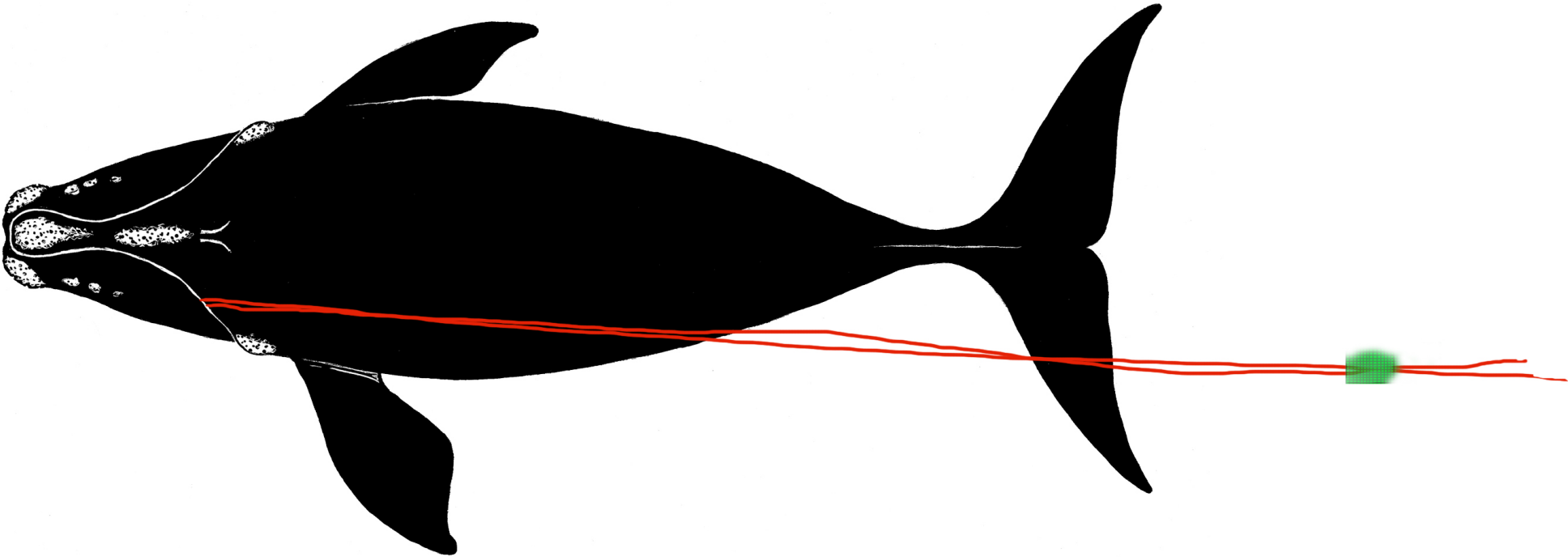
5 Jan 2017 FWRI



Species	Right Whale	Whale ID	4146
---------	-------------	----------	------

Date first observed entangled (date seen prior without gear)		23 Apr 2017 (12 Apr 2017)			
Sex	Female	Birth year	2011	Age at entanglement	6

Case study ID	CCS	NMFS		GEAR ID
	WR-2017-03	E03-17		
Gear sample collected?	No	Gear type	US lobster	



Reproductive prior to/after entanglement detection					No/ No
Entanglement injury severity					Minor
Entanglement configuration risk					Low
Wound severity	Mouth	Head/ rostrum	Flippers	Body	Flukes
	Low	None	None	Low	Low
Duration of time carrying gear		Minimum 1 day, maximum 12 days			
Disentangled?		No			
Status		Alive, last seen in 2018			
Number of prior entanglements		1			

Entanglement configuration	Line caught left side of mouth and trailing ~1 body length. Whale moving fast in Cape Cod Bay, fresh scars on tail.
Anchoring points	Mouth
Gear configuration confidence	High
Remaining questions	
Comments	Gear eventually shed

Polymer type		
Gear component		
Rope diameter (inches)		
Breaking strength (lbs)	Tested	
	New	



23 April 2017 CCS

Species	Right Whale	Whale ID	3603
---------	-------------	----------	------

Date first observed entangled (date seen prior without gear)		21 Jun 2017 (23 Apr 2017)			
Sex	Female	Birth year	2006	Age at entanglement	11

Case study ID	CCS	NMFS		GEAR ID
		E05-17		
Gear sample collected?	No, except buoy #s	Gear type	Canadian snow crab	

No drawing available

Reproductive prior to/after entanglement detection		No/no			
Entanglement injury severity		Severe			
Entanglement configuration risk		High			
Wound severity	Mouth	Head/ rostrum	Flippers	Body	Flukes
	High	Unknown	High	Unknown	Unknown
Duration of time carrying gear		Minimum 1 day, maximum 10 days			
Disentangled?		No			
Status		Dead			
Number of prior entanglements		2			

Entanglement configuration	Multiple ropes with buoys attached through mouth, around both flippers and across ventrum
Anchoring points	Mouth, flippers
Gear configuration confidence	Low
Remaining questions	At least 2 sets of gear, maybe 4.
Comments	Found anchored in gear, dragged first gear 8 miles

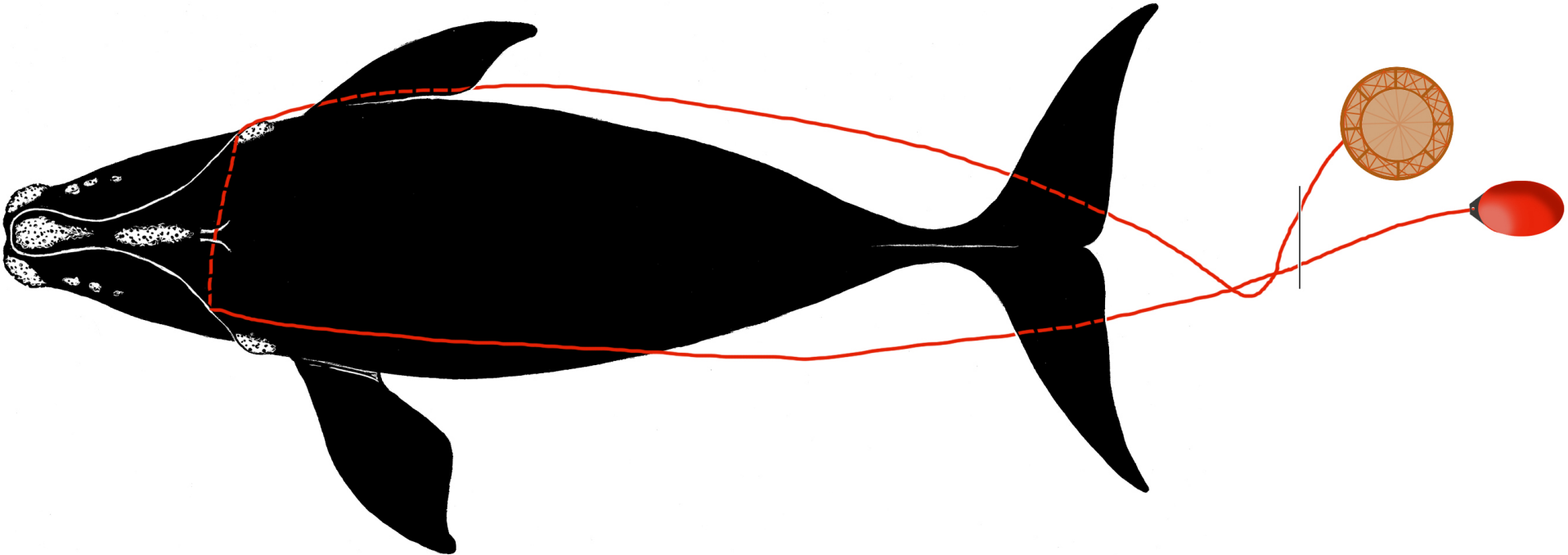
Polymer type		
Gear component		Buoys and end line
Rope diameter (inches)		
Breaking strength (lbs)	Tested	
	New	



Species	Right Whale	Whale ID	4510
---------	-------------	----------	------

Date first observed entangled (date seen prior without gear)		5 Jul 2017 (25 Jun 2017)			
Sex	Female	Birth year		Age at entanglement	3+

Case study ID	CCS	NMFS		GEAR ID
	WR-2017-06	E06-17		
Gear sample collected?	Yes	Gear type	Canadian snow crab	



Reproductive prior to/after entanglement detection					No/ No
Entanglement injury severity					Moderate
Entanglement configuration risk					High
Wound severity	Mouth	Head/ rostrum	Flippers	Body	Flukes
	Unknown	Low	Unknown	Unknown	Medium
Duration of time carrying gear		Minimum 1 day, maximum 9 days			
Disentangled?		Yes			
Status		Alive, last seen in 2018			
Number of prior entanglements		0			

Entanglement configuration	Rope and buoy exiting left mouth and fouled on line out of right mouth and going to weight at depth; anchored/dragging gear
Anchoring points	Mouth
Gear configuration confidence	High
Remaining questions	
Comments	Extensive rope burn on body, raw wounds at tail

Polymer type		
Gear component		End line and crab trap (per DFO)
Rope diameter (inches)		
Breaking strength (lbs)	Tested	
	New	



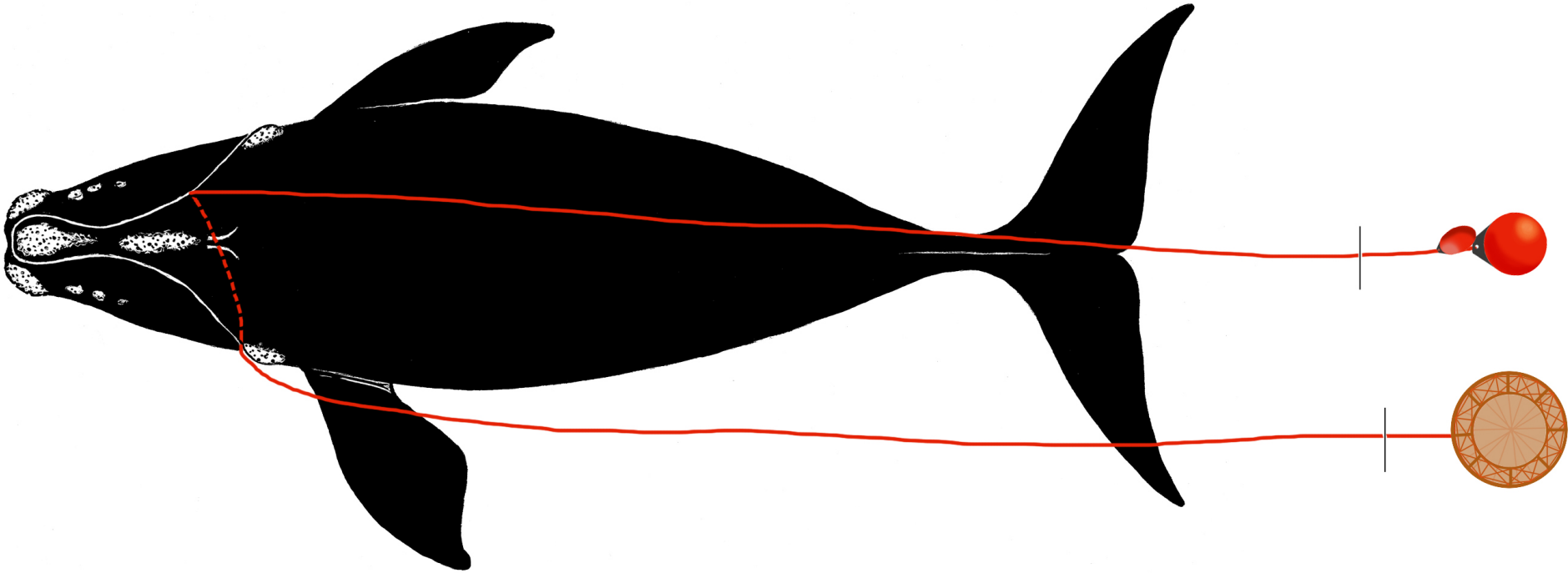
5 July 2017 NEA/CWI



Species	Right Whale	Whale ID	1317
---------	-------------	----------	------

Date first observed entangled (date seen prior without gear)		8 Jul 2017 (23 Apr 2017)			
Sex	Male	Birth year	1983	Age at entanglement	34

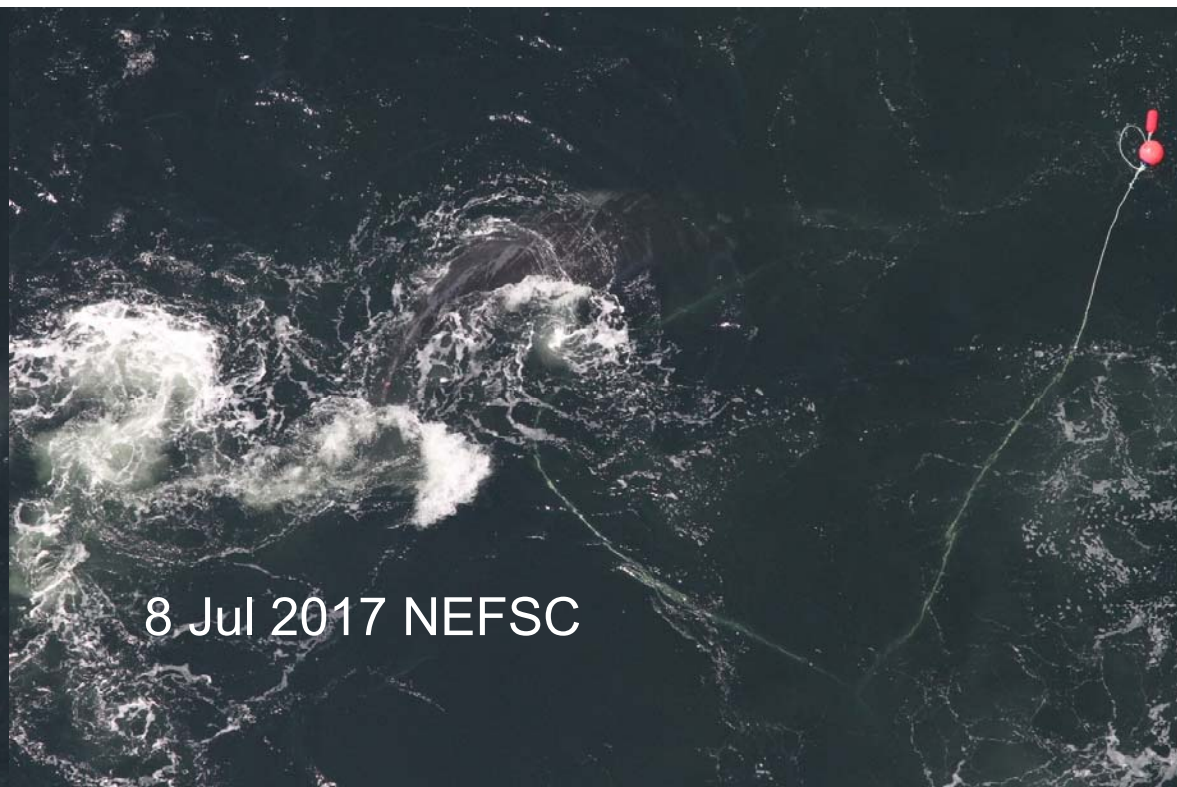
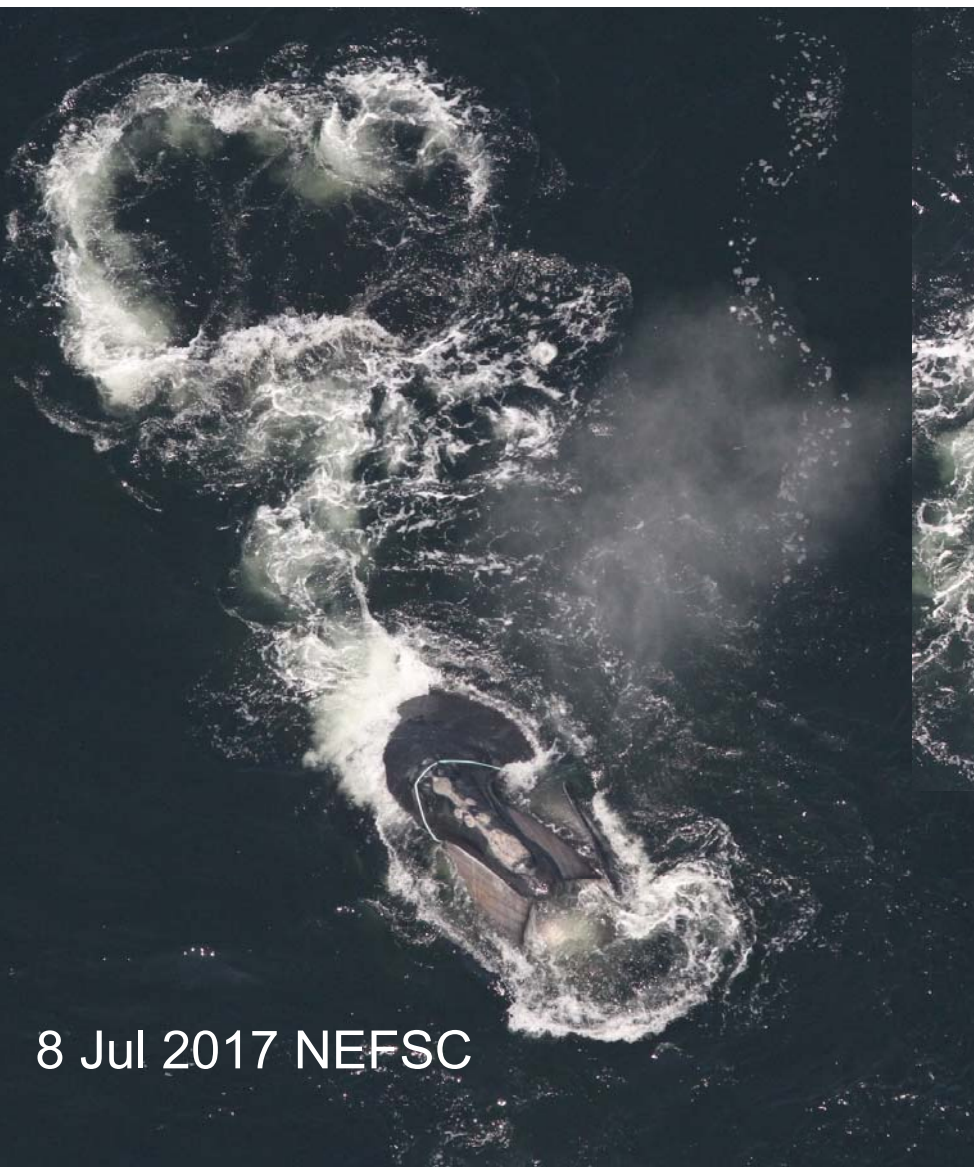
Case study ID	CCS	NMFS		GEAR ID
	WR-2017-09	E09-17		
Gear sample collected?	Yes	Gear type	Canadian snow crab	



Reproductive prior to/after entanglement detection		Yes/			
Entanglement injury severity		Severe			
Entanglement configuration risk		Low			
Wound severity	Mouth	Head/ rostrum	Flippers	Body	Flukes
	None	None	Unknown	None	High
Duration of time carrying gear		Minimum 1 day, maximum 91 days			
Disentangled?		No			
Status		Alive, last seen in 2018			
Number of prior entanglements		4			

Entanglement configuration	Single line through mouth and over rostrum
Anchoring points	Mouth
Gear configuration confidence	High
Remaining questions	Gear shed; length of buoy line not reported
Comments	Blood in water from injuries at tail stock, prob recent

Polymer type		
Gear component		End line and crab pot (per DFO)
Rope diameter (inches)		
Breaking strength (lbs)	Tested	
	New	



Species	Right Whale	Whale ID	4123
---------	-------------	----------	------

Date first observed entangled (date seen prior without gear)		9 Jul 2017 (8 Jul 2017)			
Sex	Male	Birth year	2011	Age at entanglement	6

Case study ID	CCS	NMFS		GEAR ID
	WR-2017-10	E10-17		
Gear sample collected?	No	Gear type	Canadian snow crab	

No drawing available

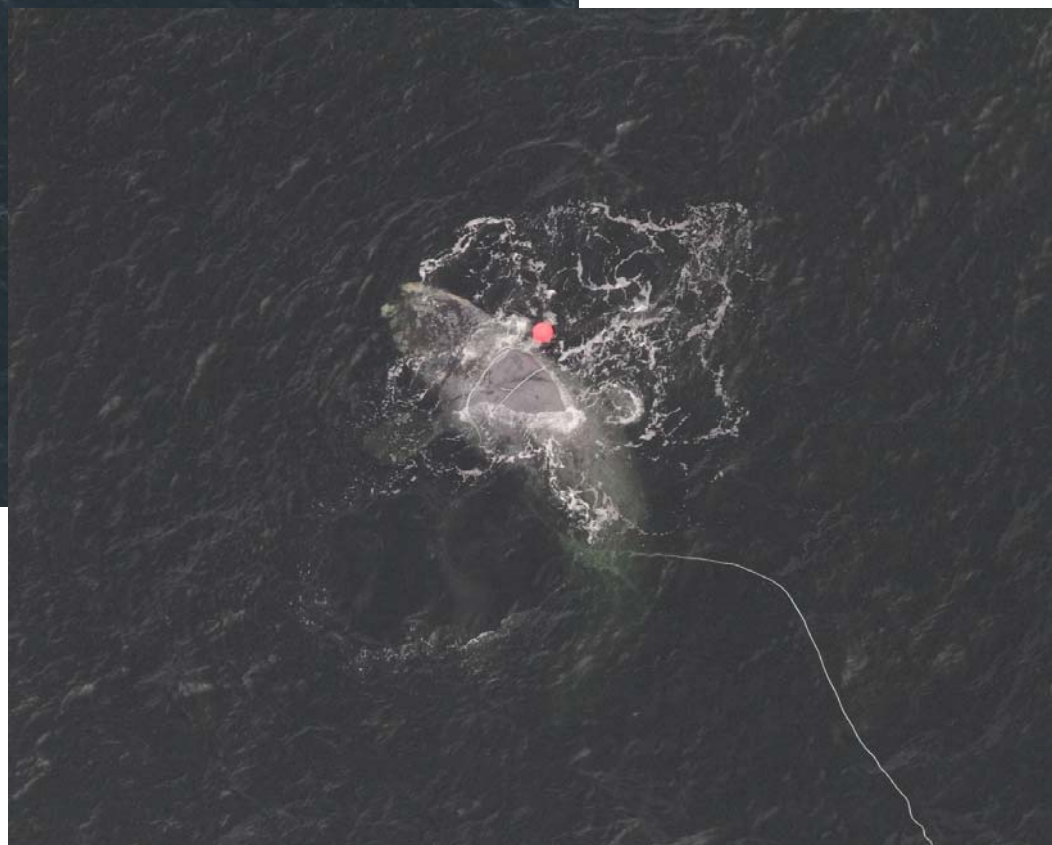
Reproductive prior to/after entanglement detection					
Entanglement injury severity				Moderate	
Entanglement configuration risk				High	
Wound severity	Mouth	Head/ rostrum	Flippers	Body	Flukes
	Unknown	None	Unknown	Low	Medium
Duration of time carrying gear		Minimum 2 days, maximum 3 days			
Disentangled?		Yes - July 10, 2017			
Status		Alive, last seen in 2018			
Number of prior entanglements		1			

Entanglement configuration	Multiple wraps of endline and buoy around body with weighted gear heading to seafloor
Anchoring points	Unsure if mouth and/or flippers involved
Gear configuration confidence	Low
Remaining questions	
Comments	Whale appeared to be semi-anchored

Polymer type		
Gear component		Buoy and end line
Rope diameter (inches)		
Breaking strength (lbs)	Tested	
	New	



10 July 2019 NOAA/NEFSC



Species	Right Whale	Whale ID	4094
---------	-------------	----------	------

Date first observed entangled (date seen prior without gear)		19 Jul 2017 (23 Apr 2017)			
Sex	Female	Birth year	2010	Age at entanglement	7

Case study ID	CCS	NMFS		GEAR ID
	WR-2017-13	E13-17		
Gear sample collected?	No	Gear type	Canadian snow crab	

No drawing available

Reproductive prior to/after entanglement detection					Yes/No
Entanglement injury severity					Severe
Entanglement configuration risk					High
Wound severity	Mouth	Head/ rostrum	Flippers	Body	Flukes
	Medium	Medium	Unknown	High	High
Duration of time carrying gear		Minimum 1 day, maximum 86 days			
Disentangled?		No			
Status		Likely dead - not seen since 2017			
Number of prior entanglements		2			

Entanglement configuration	Single line through mouth and trailing about 1 body length to a poly buoy
Anchoring points	Mouth
Gear configuration confidence	O
Remaining questions	Unclear if weighted gear attached aft of buoy
Comments	Whale in poor condition, deep injuries at tail

Polymer type		
Gear component		Buoy and end line
Rope diameter (inches)		
Breaking strength (lbs)	Tested	
	New	

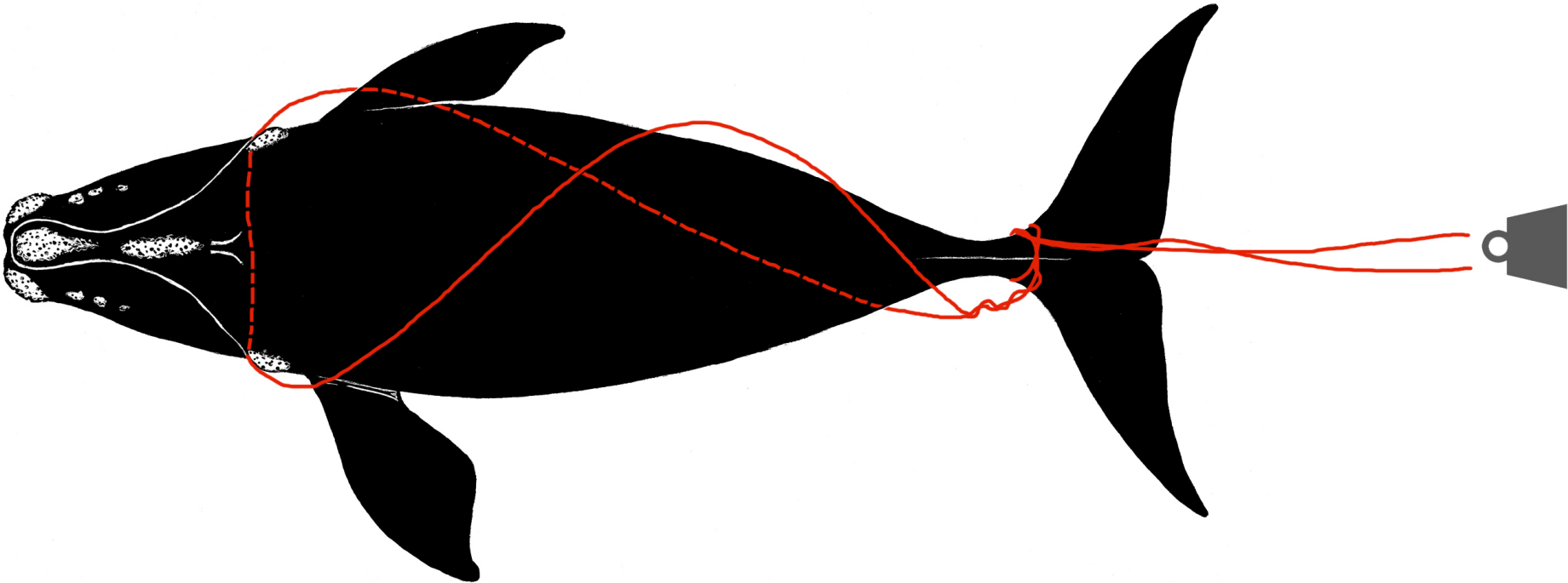


19 July 2017 NOAA/NEFSC

Species	Right Whale	Whale ID	3245
---------	-------------	----------	------

Date first observed entangled (date seen prior without gear)		28 Aug 2017 (25 Aug 2017)			
Sex	Male	Birth year	2002	Age at entanglement	15

Case study ID	CCS	NMFS		GEAR ID
	WR-2017-27	E28-17		
Gear sample collected?		No	Gear type	Canadian - unknown



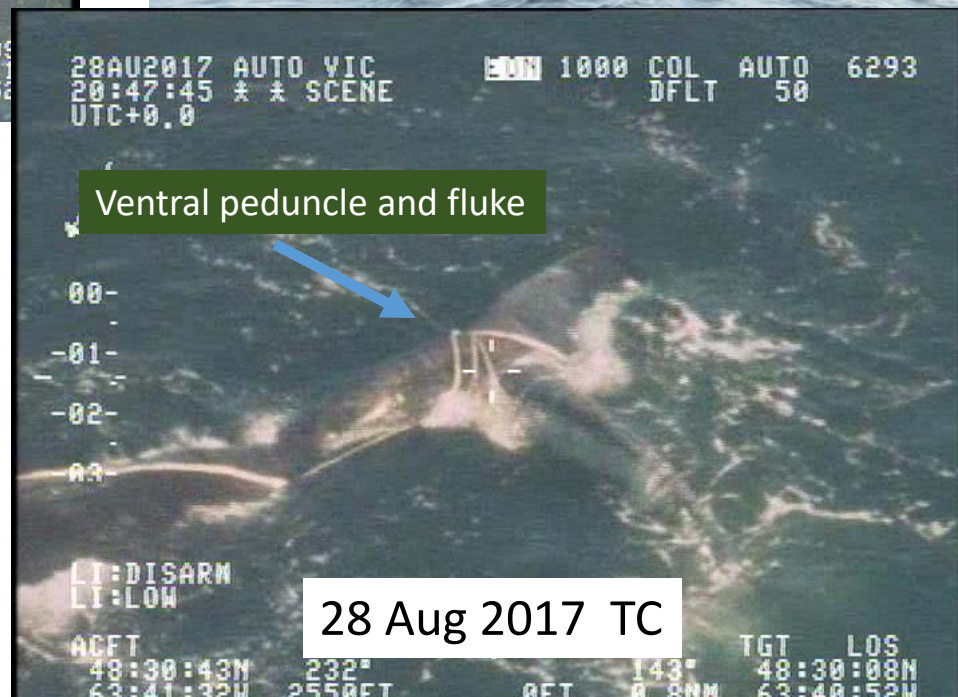
Reproductive prior to/after entanglement detection					
Entanglement injury severity				Moderate	
Entanglement configuration risk				High	
Wound severity	Mouth	Head/ rostrum	Flippers	Body	Flukes
	None	None	Unknown	None	Medium
Duration of time carrying gear		Minimum 1 day, maximum 3 days			
Disentangled?		No			
Status		Alive, last seen in 2018			
Number of prior entanglements		1			

Entanglement configuration	Line through mouth and around peduncle
Anchoring points	Mouth, tail
Gear configuration confidence	High
Remaining questions	Weight may have been attached
Comments	Gear shed; entangled in Gulf of St Lawrence

Polymer type		
Gear component		
Rope diameter (inches)		Noted as larger diameter rope
Breaking strength (lbs)	Tested	
	New	



28 Aug 2017 TC



Species	Right Whale	Whale ID	4504
---------	-------------	----------	------

Date first observed entangled (date seen prior without gear)		15 Sep 2017 (29 Jul 2017)			
Sex	Female	Birth year	2015	Age at entanglement	2

Case study ID	CCS	NMFS		GEAR ID
		E31-17		
Gear sample collected?	Yes	Gear type	Canadian snow crab	

No drawing available

Reproductive prior to/after entanglement detection					No/ -
Entanglement injury severity					Severe
Entanglement configuration risk					High
Wound severity	Mouth	Head/ rostrum	Flippers	Body	Flukes
	High	High	High	Medium	Unknown
Duration of time carrying gear		Minimum 1 day, maximum 47 days			
Disentangled?		No			
Status		Dead			
Number of prior entanglements		0			

Entanglement configuration	Three lines through mouth and two wraps around body and flippers; may have drowned in gear
Anchoring points	Mouth, flipper
Gear configuration confidence	Low
Remaining questions	Old pot but new ropes - not sure if derelict or active
Comments	499 ft line in 3 sections of 3/4 in and 7/8 in

Polymer type		Uncertain but will presume polypro/polyester (weakest)
Gear component		End line and crab trap
Rope diameter (inches)		3/4 (0.7848); 7/8 (0.875)
Breaking strength (lbs)	Tested	
	New	8 500; 10 225



15 Sep 2017 DFO



19 Sep 2017 Unk